



USER GUIDE

ITBROADCAST-INFOTÉKA-LIVEU

1. itBroadcast kit assembly instructions



1. Dish carrier bag

- 1.1. Dish
- 1.2. Dish fixing telescope
- 1.3. Dish BNC coax cable

2. 1740 Peli case

- 2.1. Tripod + 3D head
- 2.2. Head unit mounted on a console (3D head mounted on a quick-change stand)

3. 1550 Peli Broadcast case

2. Steps of assembling

1. Open the 1740 Peli case and take the head unit (2.2) and the tripod (2.1) out.



2.

Take the stabilizing screws from the end of the head unit's console (2.2) out.



3.

From the dish carrier bag (1) take the dish (1.1) out and mount it on the head console with the stabilizing screws.



4.

Set the tripod (2.1) up and lower it into a stable position (making sure there are no obstructions in the way, such as buildings, trees, people, etc.)

Fix the head unit (2.2) and the dish (1.1) on the tripod's 3D head with the help of the quick-change stand placed onto the bottom of the console.



5.

With the BNC coax cable (1.3) connect the head unit (2.2) and the 1550 Peli Broadcast case (3).

Finishing the set up process of the dish (B) fix it onto the tripod with the help of the telescopes. Fix the tilt locks on the telescope.



6.

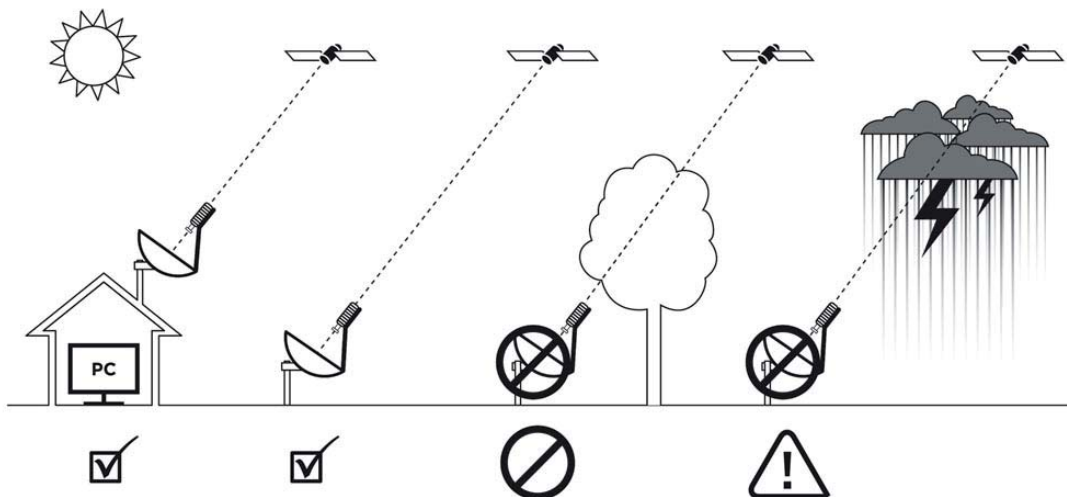
itBroadcast kit when assembled.



3. Dish installation

1.

As the first step, calculate the placement of the dish. (The local environment is of great importance: the dish should not be covered, by any means.)



2.

With the help of the <http://finder.tooway-instal.com> website, determine its proper position.

3.

On the page you will be informed on the elevation and geographical azimuth values. (You may provide a lower elevation value than the one shown on the screen.)

Ka-Sat Finder
 KA-SAT Finder provides essential informations for Tooway antenna installers on KA-SAT satellite. KA-SAT Finder is a GPS and maps based application. It provides spot configuration, azimuth and elevation angles according to your geographical position.

Map **Coordinates**

Latitude : 41.69537
 Longitude : 44.81234

Results

Elevation
 29.72

Geographical azimuth
 227.33

Spot configuration

Print

4.

and you will be able to configure the beam-spot as well. In case it is needed, the page can be printed. A digital bevel helps you to set the elevation accurately.

Ka-Sat Finder
 KA-SAT Finder provides essential informations for Tooway antenna installers on KA-SAT satellite. KA-SAT Finder is a GPS and maps based application. It provides spot configuration, azimuth and elevation angles according to your geographical position.

Map **Coordinates**

Latitude : 41.69537
 Longitude : 44.81234

Results

Elevation
 29.72

Geographical azimuth
 227.33

Spot configuration

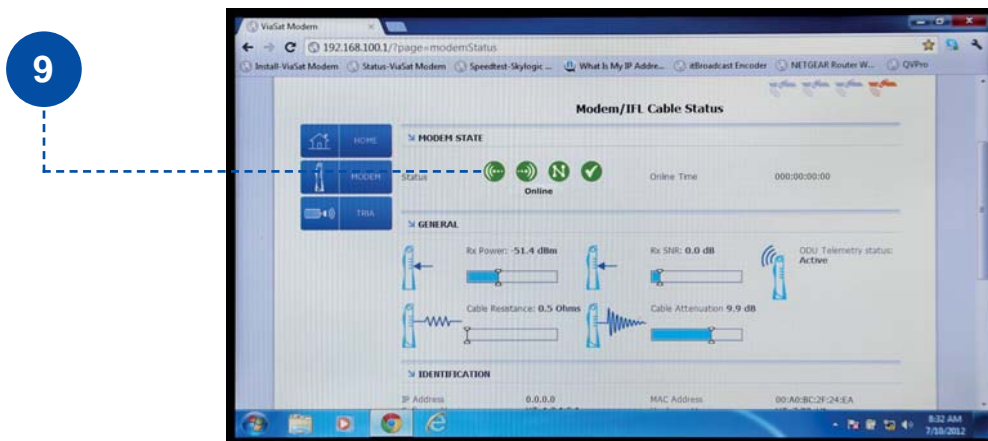
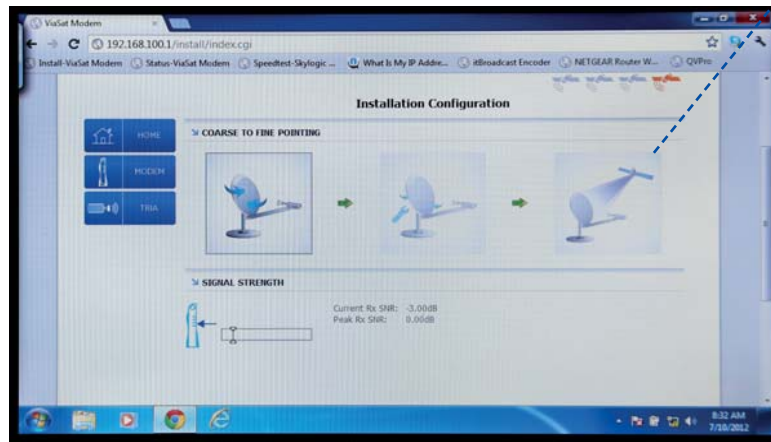
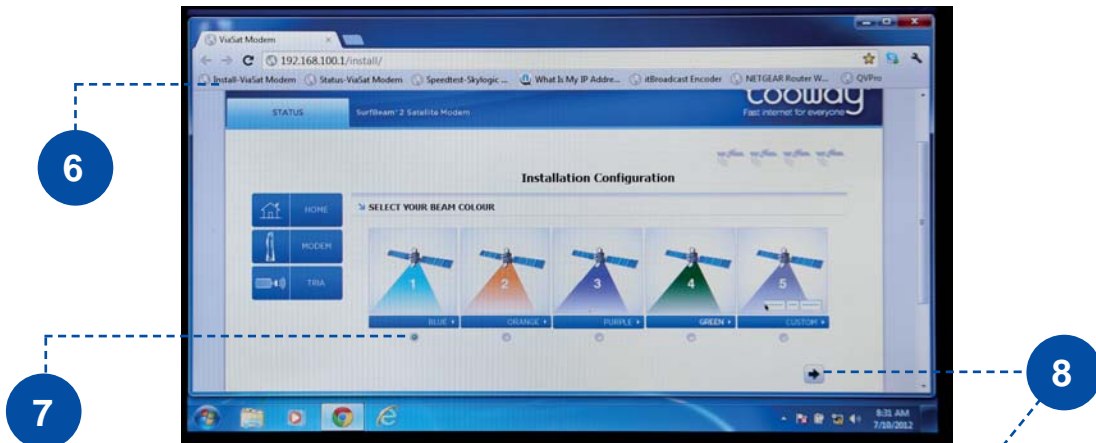
Print

5.

1. Connect the BNC connectors of the coax cable both to the antenna and the itBroadcast suitcase.
2. Plug the power supply to the itBroadcast unit.
3. With the help of the steel button on the left, turn the itBroadcast unit on.
4. Turn the tablet PC on or connect through the itBroadcast WiFi (WiFi password: multiplex).
5. Run Google Chrome on the PC.



6. Click on the bookmark Install Viasat (<http://192.168.100.1/install>)
7. Choose the beam you wish to use.
8. Proceed to the next step and point the antenna to the satellite (audible broken beep).
9. Wait until all the icons change their colour to green. In order to receive IP addresses automatically, wait for 2 minutes after the online icon has turned to green. (DHCP)



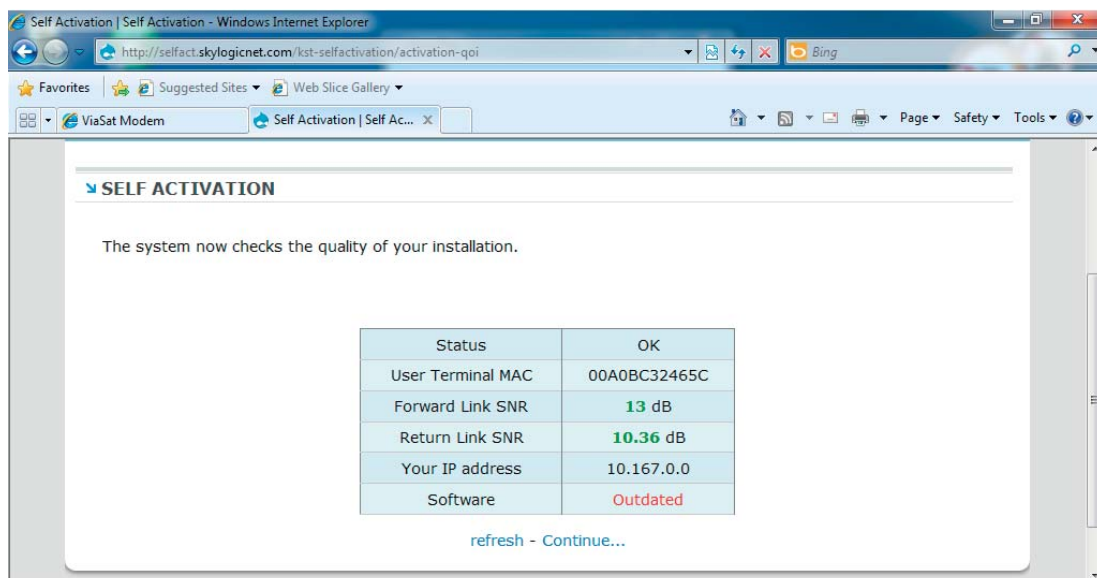
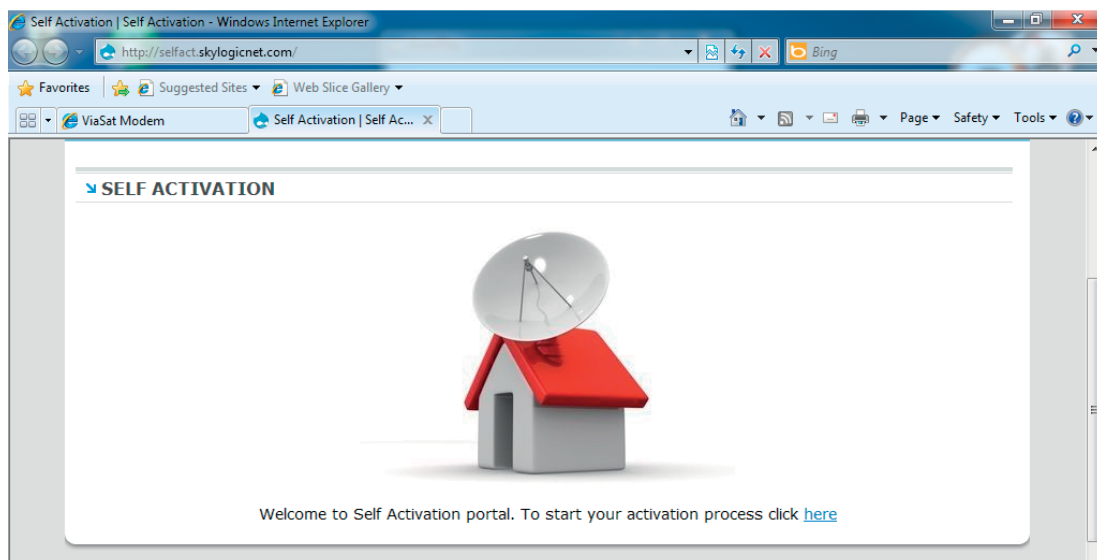
IMPORTANT!

If you are using Eutelsat’s NewsSpotter service with guaranteed throughput, don’t forget to reserve bandwidth for the given location and time in advance, otherwise you will not have any working internet connection.

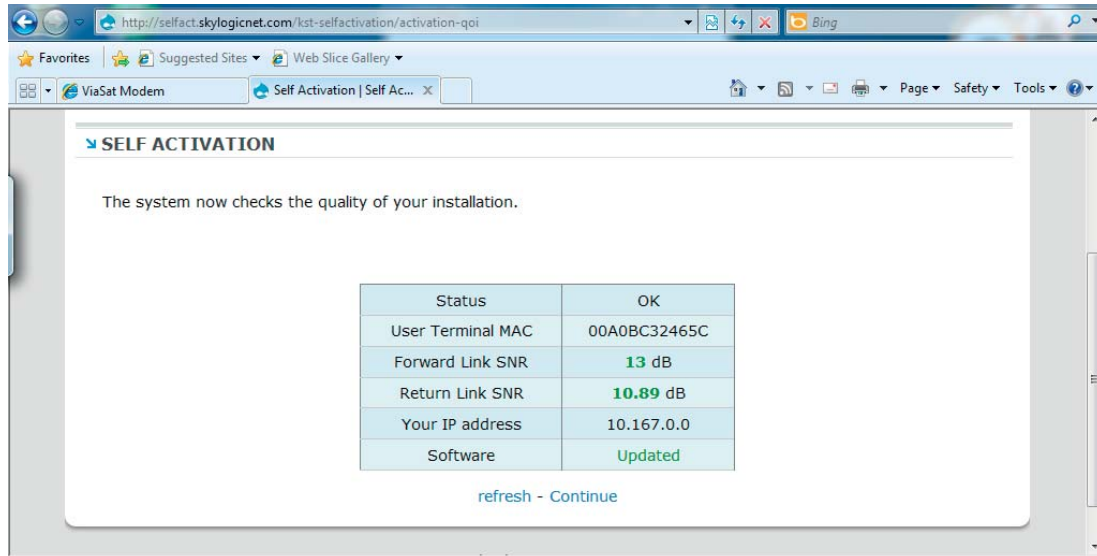
In case you plan to use the itBroadcast unit with Standard internet service (e.g. 10/4 Mbps), there is no need to make any reservations as the service should be available continuously.

6.

Roughly one minute after connecting, activate the service on the following website: <http://selfact.skylogicnet.com>.

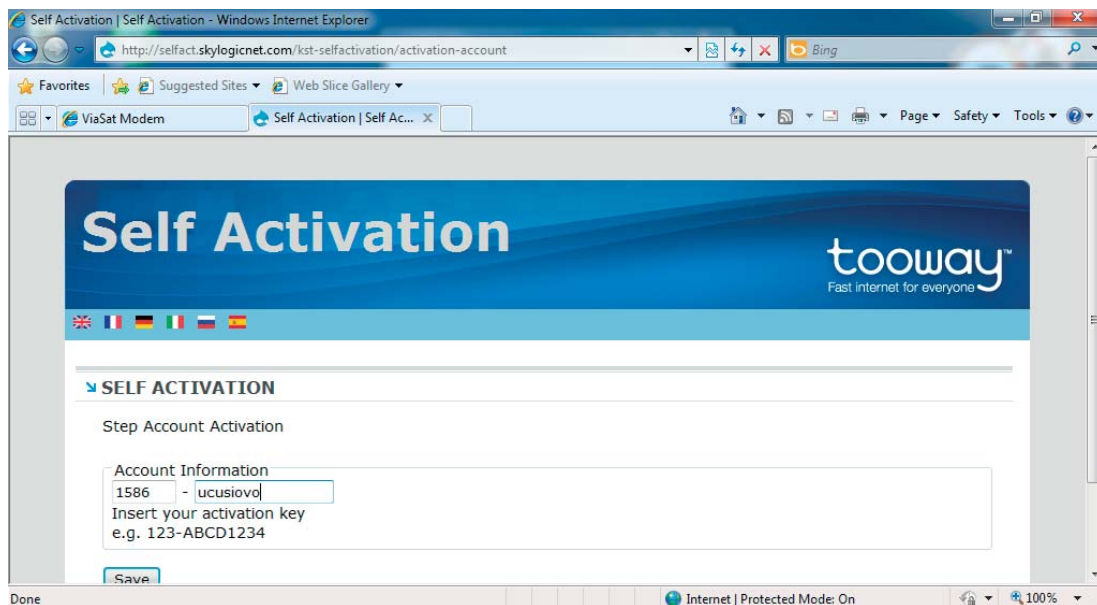


By proper installation, a green *Updated* sign will become visible. To continue, click on *Continue*.

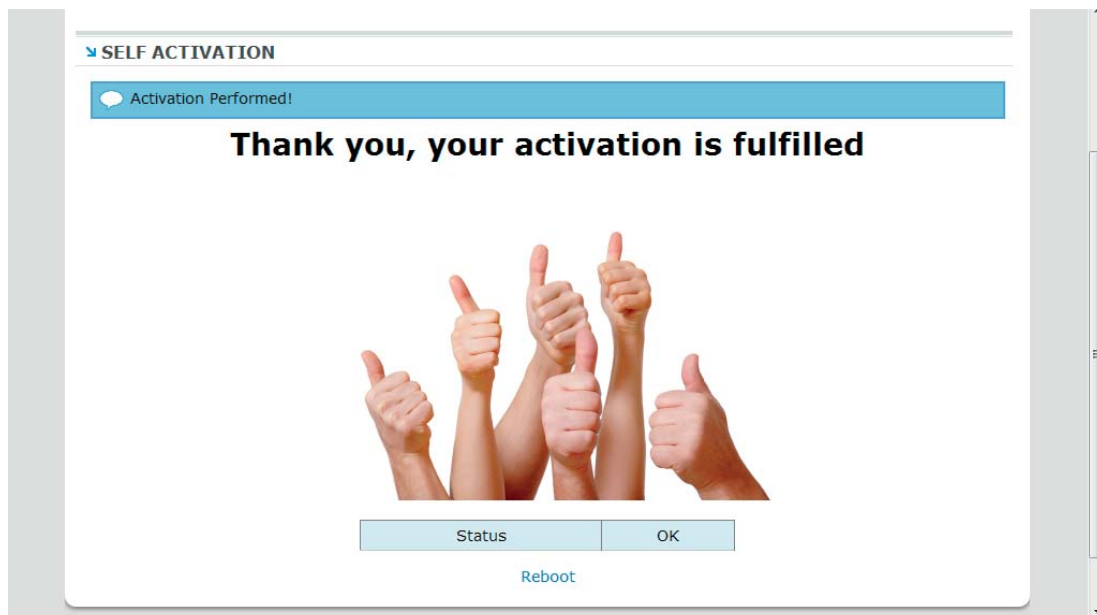


7.

On the next page provide your activation code consisting of four numbers and eight letters.



8.

Activaton is finished successfully.

To open a satellite window, please contact our customer service for technical support.